

Elías-Gutiérrez *et al.*, 2019. Who is *Moina micrura*? Redescription of one of the most confusing cladocerans from *terra typica*, based on integrative taxonomy. *Limnetica*, 38 (1): 227-252 (2018)

SUPPLEMENTARY INFORMATION

Fig S1. BOLD ID Trees: 12S and COI. *Árbol de identificación de BOLD: 12S y COI.*

BOLD TaxonID Tree

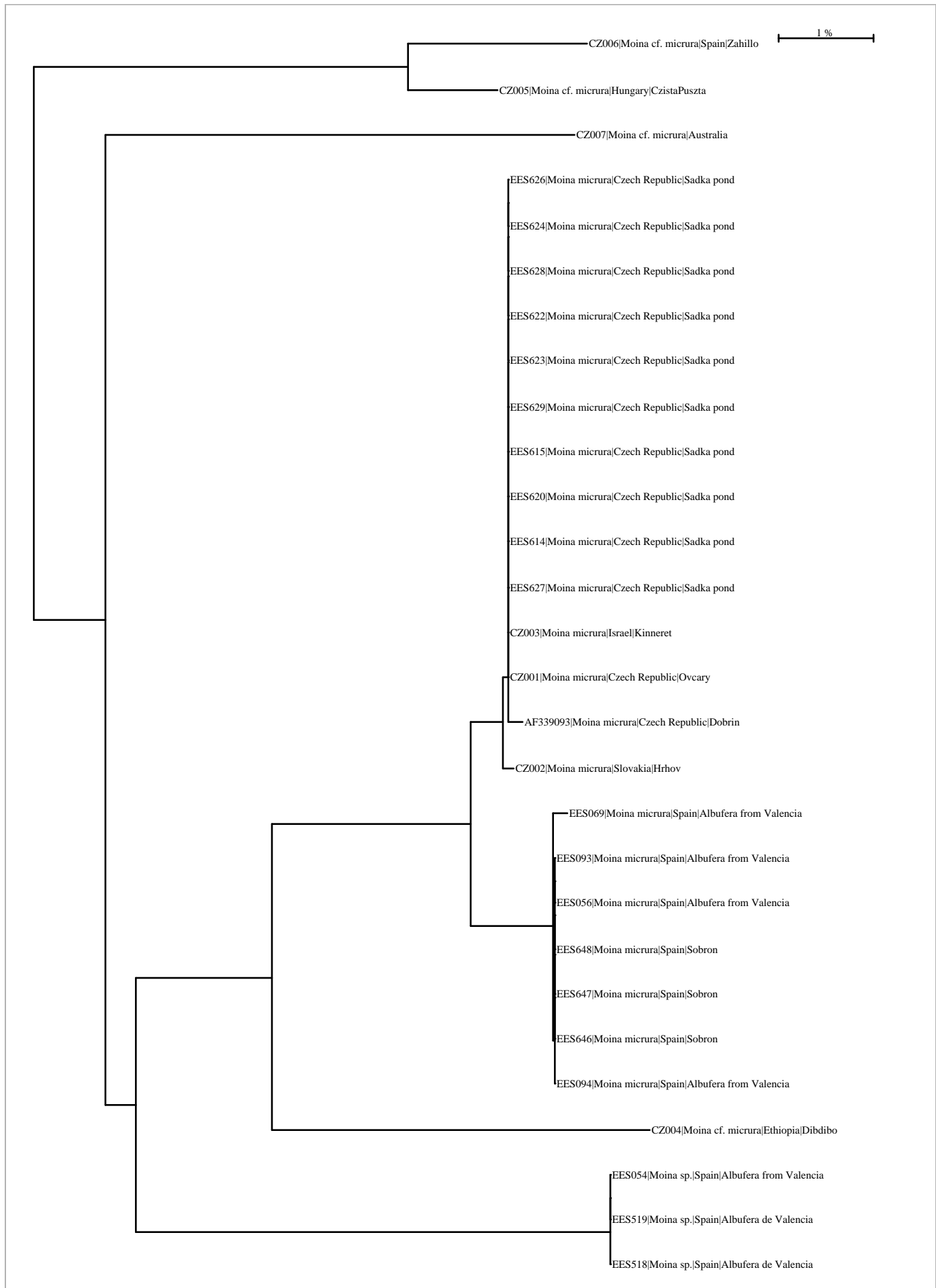
Title : Tree Result - DS-MICRURA1 (28 records selected)
Date : 15-May-2017
Data Type : Nucleotide
Distance Model : Kimura 2 Parameter
Marker : 12S
Colourization : [blue]=Stop Codons [red]=Contamination or misidentification

Label : Sample ID
Label : Species
Label : Country
Label : Exact Site

Filter : length > 200bp only
Filter : exclude records flagged as misidentifications
Filter : exclude records with stop codons
Filter : exclude contaminants
Filter : composed of <1% N

Sequence Count : 28
Species count : 3
Genus count : 1
Family count : 1
Unidentified : 0

BIN Count : 3



BOLD TaxonID Tree

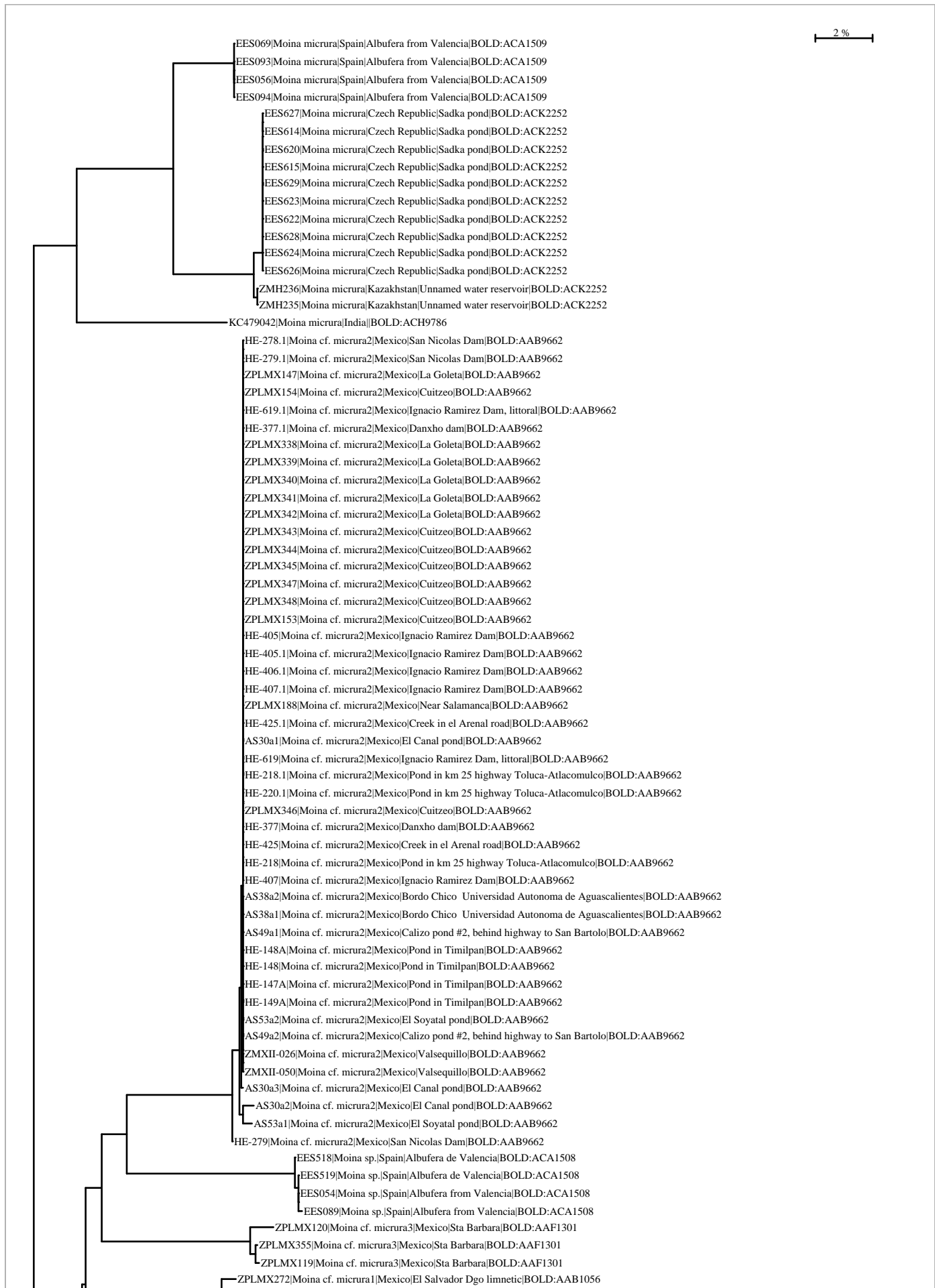
Title : Tree Result - DS-MICRURA1 (147 records selected)
Date : 15-May-2017
Data Type : Nucleotide
Distance Model : Kimura 2 Parameter
Marker : COI-5P
Colourization : [blue]=Stop Codons [red]=Contamination or misidentification

Label : Sample ID
Label : Species
Label : Country
Label : Exact Site
Label : Barcode Cluster (BIN)

Filter : length > 200bp only
Filter : exclude records flagged as misidentifications
Filter : composed of <1% N
Filter : exclude records with stop codons
Filter : exclude contaminants

Sequence Count : 143
Species count : 7
Genus count : 1
Family count : 1
Unidentified : 5

BIN Count : 11



↳ ZPLMX119|Moina cf. micrura3|Mexico|Sta Barbara|BOLD:AAF1301
 ZPLMX272|Moina cf. micrura1|Mexico|El Salvador Dgo limnetic|BOLD:AAB1056
 ZPLMX270|Moina cf. micrura1|Mexico|El Salvador Dgo limnetic|BOLD:AAB1056
 ZPLMX363|Moina cf. micrura1|Mexico|El Salvador Dgo limnetic|BOLD:AAB1056
 ZPLMX365|Moina cf. micrura1|Mexico|El Salvador Dgo limnetic|BOLD:AAB1056
 ZPLMX361|Moina cf. micrura1|Mexico|El Salvador Dgo limnetic|BOLD:AAB1056
 ZPLMX269|Moina cf. micrura1|Mexico|El Salvador Dgo limnetic|BOLD:AAB1056
 ZPLMX362|Moina cf. micrura1|Mexico|El Salvador Dgo limnetic|BOLD:AAB1056
 ZPLMX276|Moina cf. micrura1|Mexico|Sta Teresita III A|BOLD:AAB1056
 ZPLMX273|Moina cf. micrura1|Mexico|Sta Teresita III A|BOLD:AAB1056
 ZPLMX288|Moina cf. micrura1|Mexico|Sta Teresita III A|BOLD:AAB1056
 ZPLMX290|Moina cf. micrura1|Mexico|Sta Teresita III A|BOLD:AAB1056
 ZPLMX370|Moina cf. micrura1|Mexico|Km 44 Parral-Jimenez|BOLD:AAB1056
 ZPLMX277|Moina cf. micrura1|Mexico|Sta Teresita III A|BOLD:AAB1056
 ZPLMX284|Moina cf. micrura1|Mexico|Fin Carretera Chihuahua B|BOLD:AAB1056
 ZPLMX261|Moina cf. micrura1|Mexico|End hwy. Chihuahua B|BOLD:AAB1056
 ZPLMX377|Moina cf. micrura1|Mexico|Fin Carretera Chihuahua B|BOLD:AAB1056
 ZPLMX376|Moina cf. micrura1|Mexico|End hwy. Chihuahua B|BOLD:AAB1056
 ZPLMX375|Moina cf. micrura1|Mexico|End hwy. Chihuahua B|BOLD:AAB1056
 ZPLMX372|Moina cf. micrura1|Mexico|End hwy. Chihuahua B|BOLD:AAB1056
 ZPLMX287|Moina cf. micrura1|Mexico|End hwy. Chihuahua B|BOLD:AAB1056
 ZPLMX286|Moina cf. micrura1|Mexico|End hwy. Chihuahua B|BOLD:AAB1056
 ZPLMX285|Moina cf. micrura1|Mexico|End hwy. Chihuahua B|BOLD:AAB1056
 ZPLMX374|Moina cf. micrura1|Mexico|End hwy. Chihuahua B|BOLD:AAB1056
 ZPLMX373|Moina cf. micrura1|Mexico|End hwy. Chihuahua B|BOLD:AAB1056
 ZPLMX369|Moina cf. micrura1|Mexico|Km 44 Parral-Jimenez|BOLD:AAB1056
 ZPLMX368|Moina cf. micrura1|Mexico|Km 44 Parral-Jimenez|BOLD:AAB1056
 ZPLMX367|Moina cf. micrura1|Mexico|Km 44 Parral-Jimenez|BOLD:AAB1056
 ZPLMX366|Moina cf. micrura1|Mexico|Km 44 Parral-Jimenez|BOLD:AAB1056
 ZPLMX168|Moina cf. micrura1|Mexico|Km 44 Parral-Jimenez|BOLD:AAB1056
 ZPLMX167|Moina cf. micrura1|Mexico|Km 44 Parral-Jimenez|BOLD:AAB1056
 ZPLMX371|Moina cf. micrura1|Mexico|Km 44 Parral-Jimenez|BOLD:AAB1056
 HE-246.1|Moina cf. micrura4|Mexico|Laguna Vernet, 2a Seccion|BOLD:ABA3797
 HE-249.1|Moina cf. micrura4|Mexico|Laguna Vernet, 2a Seccion|BOLD:ABA3797
 HE-250.1|Moina cf. micrura4|Mexico|Laguna Vernet, 2a Seccion|BOLD:ABA3797
 HE-248.1|Moina cf. micrura4|Mexico|Laguna Vernet, 2a Seccion|BOLD:ABA3797
 HE-601|Moina cf. micrura5|Mexico|El Rosario II|BOLD:ABA0662
 HE-563|Moina cf. micrura5|Mexico|Pond 2 highway Jonuta-Escarcega, Santa Lucia bridge|BOLD:A...
 HE-564|Moina cf. micrura5|Mexico|Pond 2 highway Jonuta-Escarcega, Santa Lucia bridge|BOLD:A...
 HE-566|Moina cf. micrura5|Mexico|Pond 2 highway Jonuta-Escarcega, Santa Lucia bridge|BOLD:A...
 HE-252|Moina cf. micrura5|Mexico|Pond 1 Highway Jonuta-Escarcega|BOLD:ABA0662
 HE-304|Moina cf. micrura5|Mexico|Pond 3, Highway Jonuta-Escarcega|BOLD:ABA0662
 HE-251|Moina cf. micrura5|Mexico|Pond 1 Highway Jonuta-Escarcega|BOLD:ABA0662
 HE-567.1|Moina cf. micrura5|Mexico|Pond 2 highway Jonuta-Escarcega, Santa Lucia bridge|BOLD ...
 HE-565|Moina cf. micrura5|Mexico|Pond 2 highway Jonuta-Escarcega, Santa Lucia bridge|BOLD:A...
 HE-253|Moina cf. micrura5|Mexico|Pond 1 Highway Jonuta-Escarcega|BOLD:ABA0662
 HE-304.1|Moina cf. micrura5|Mexico|Pond 3, Highway Jonuta-Escarcega|BOLD:ABA0662
 HE-566.1|Moina cf. micrura5|Mexico|Pond 2 highway Jonuta-Escarcega, Santa Lucia bridge|BOLD ...
 HE-565.1|Moina cf. micrura5|Mexico|Pond 2 highway Jonuta-Escarcega, Santa Lucia bridge|BOLD ...
 HE-564.1|Moina cf. micrura5|Mexico|Pond 2 highway Jonuta-Escarcega, Santa Lucia bridge|BOLD ...
 HE-563.1|Moina cf. micrura5|Mexico|Pond 2 highway Jonuta-Escarcega, Santa Lucia bridge|BOLD ...
 HE-601.1|Moina cf. micrura5|Mexico|El Rosario II|BOLD:ABA0662
 HE-253.1|Moina cf. micrura5|Mexico|Pond 1 Highway Jonuta-Escarcega|BOLD:ABA0662
 HE-252.1|Moina cf. micrura5|Mexico|Pond 1 Highway Jonuta-Escarcega|BOLD:ABA0662
 HE-251.1|Moina cf. micrura5|Mexico|Pond 1 Highway Jonuta-Escarcega|BOLD:ABA0662
 ZHM046|Moina micrura|Russia|Peet lake near Diakovka|BOLD:ADF4310
 ZHM045|Moina micrura|Russia|Peet lake near Diakovka|BOLD:ADF4310
 ZMH042|Moina micrura|Russia|Peet lake near Diakovka|BOLD:ADF4310
 ZHM220|Moina micrura|Russia|Unnamed pond|BOLD:ADF4310
 ZHM003|Moina micrura|Russia|A pond at border of Saratov and Volgograd Areas|BOLD:ADF4310
 HE-646.1||South Korea|Junam Reservoir|BOLD:ABW7759
 HE-645.1||South Korea|Junam Reservoir|BOLD:ABW7759
 HE-647.1||South Korea|Junam Reservoir|BOLD:ABW7759
 HE-643.1||South Korea|Junam Reservoir|BOLD:ABW7759
 HE-644.1||South Korea|Junam Reservoir|BOLD:ABW7759
 ZMH232|Moina micrura|Kazakhstan|Unnamed channel|BOLD:ABW7759
 ZHM152|Moina micrura|Russia|A pond in Ramzay village|BOLD:ABW7759
 ZHM151|Moina micrura|Russia|A pond in Ramzay village|BOLD:ABW7759
 ZHM100|Moina micrura|Hungary|Fueleopszallas, Kelemenszek (Kiskunsag National Park)|BOLD...
 ZHM154|Moina micrura|Russia|A pond in Ramzay village|BOLD:ABW7759
 ZHM153|Moina micrura|Russia|A pond in Ramzay village|BOLD:ABW7759
 ZHM101|Moina micrura|Hungary|Fueleopszallas, Kelemenszek (Kiskunsag National Park)|BOLD...
 HQ336797|Moina micrura|Russia||BOLD:ABW7759

Fig S2. Maximum likelihood expanded trees: 12S and COI. *Árboles expandidos con máxima verosimilitud: 12S y COI.*

